

980 DATA SHEET – FUNCTIONAL TESTING FOR HDR

TESTING DYNAMIC RANGE AND MASTERING ON HDR-CAPABLE ULTRA HIGH DEFINITION SOURCES

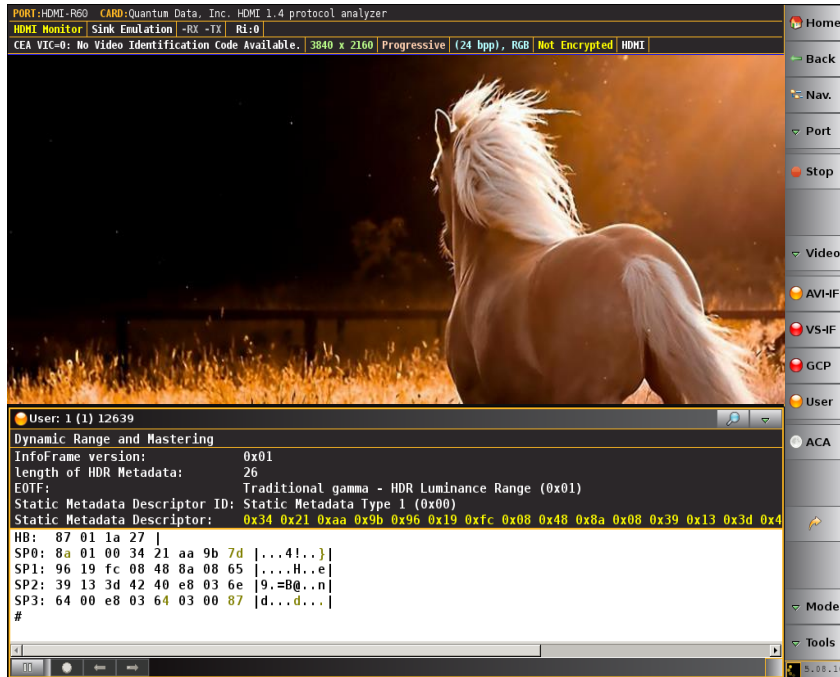
The 980 HDMI Protocol Analyzer module supports functional testing of High-Dynamic Range (HDR) metadata on HDMI 2.0a sources.

FUNCTIONAL TESTING HDR-CAPABLE SOURCES

For testing HDR-capable sources, the 980 HDMI Protocol Analyzer module emulates an HDR-capable sink. It can emulate an EDID indicating HDR support and transmit it to the HDR-capable source device under test. The module enables you to view the transmitted image on the 980's embedded display. (Note the 980 embedded display is not HDR-capable.) The module also enables you to view the Dynamic Range and Mastering InfoFrame metadata values transmitted by the source including the Electro-Optical Transfer Function (EOTF) and the Static Metadata that provides the dynamic range of the video stream.



Viewing HDR InfoFrame metadata in 980 Real Time Mode



980B with HDMI Protocol Analyzer module

980 DATA SHEET – COMPLIANCE TESTING FOR HDR

TESTING DYNAMIC RANGE AND MASTERING ON HDR-CAPABLE ULTRA HIGH DEFINITION SOURCES

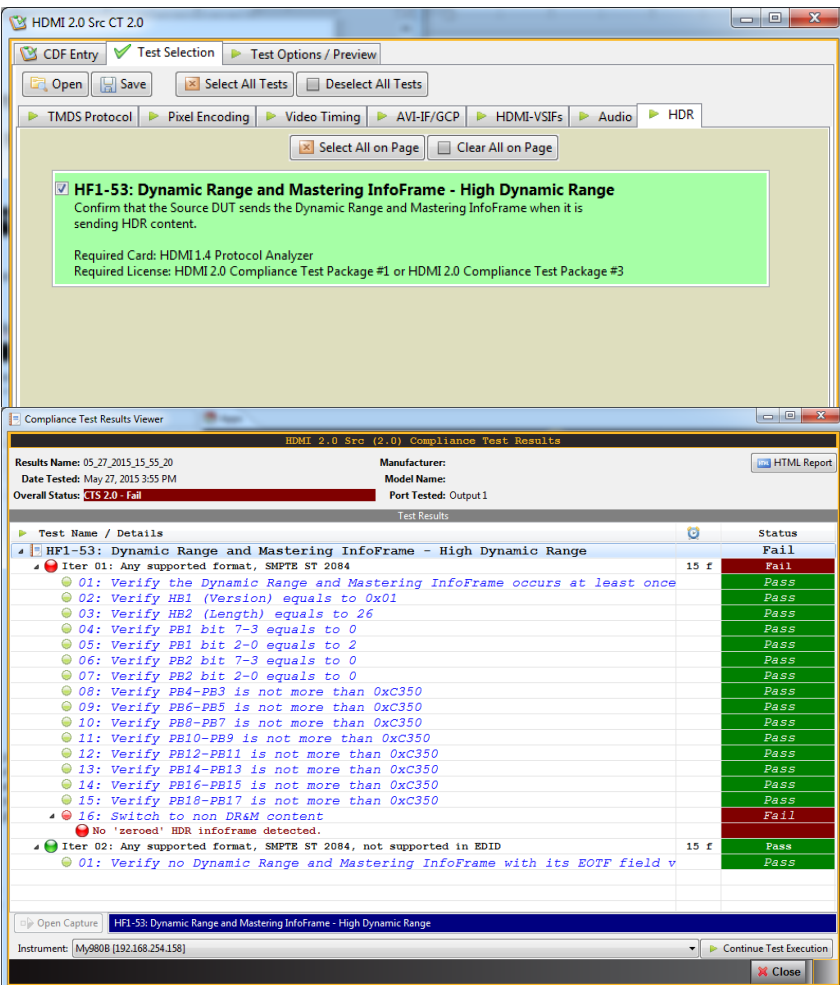
The 980 HDMI 2.0 Protocol Analyzer module supports compliance testing of High-Dynamic Range (HDR) metadata on HDMI 2.0a sources.

COMPLIANCE TESTING HDR-CAPABLE SOURCES

For compliance testing HDR-capable sources, the 980 HDMI 2.0 Protocol Analyzer module emulates an HDR-capable sink. It can emulate an EDID indicating HDR support and transmit it to the HDR-capable source device under test.

The operation of the compliance test application is simple and convenient. Detailed results are provided which can be shared with colleagues and other subject matter experts. An HTML report is also available. The Quantum Data compliance test solution are ideal for pre-testing and self-testing (where permitted) and shortens time to market and reduces costs.

You can run the compliance test through the 980 GUI Manager application either from the embedded touch screen or from a PC hosting the external 980 GUI Manager application (right).



Viewing HDR Compliance Test Screens

980B with HDMI 2.0 Protocol Analyzer module